

46th Annual Manhattan Beach Grand Prix Bike Race

by Eric M. Hartman, KF6VUW

Volume 39, Issue 7

The 46th Manhattan Beach annual Grand Prix bike race makes for a challenging job for the volunteer's of the MBPD's traffic division. It's a balance of watching for downed racers and keeping the race course clear of pedestrians. We also assist our residents in and out of their land locked streets. Although for the most part the racers ride with no accidents, some do not escape the law of gravity. Our volunteers perform all year with some events that are absolutely mind numbing they are so boring, but this event, at least from my point of view, is not one of them. If I could, I would close my eyes when I work the corners in this bike race. I can barely stand to watch large groups of bicycles racing at speeds of up to 30 MPH. It often can turn very ugly as riders collide and became a mass of hurling brightly colored lycra and very expensive bikes parts tumbling through the air.

These are some of the most competitive people that you will ever meet and even when they have a spill they will get up and continue to ride with the road rash and scrapes, bumps if their bikes are not too bent or busted to continue to ride. One guy went down right in front of me. He was out cold. His bike was in a twisted heap. When he came to, he tried to convince us to let him get up and continue the race. We had to show him his bike to convince him there was no reason to get up. He still wanted to ride as the paramedics arrived, put him on a backboard and transported him to the hospital.

Come out next year to watch. It is exciting and horrifying all at once! Many thanks to all the MBPD Traffic Volunteers who participated this year!

Eric M. Hartman



Inside this issue:

Manhattan Beach Bike Race 1 - 3

Welcome to Your Club Station by Pete Livingston 4 - 5

My Field Day Setup by Paul Lukas 6

W6TRW Banquet Information 7

Club Calendar of 8

W6TRW Club Information 9

Special points of interest:

- Swapmeet - Saturday October 27th, 7:30 to 11:30 AM
- W6TRW Club Banquet, Saturday, November .10th.

46th Annual Manhattan Beach Grand Prix Bike Race

Photos by Stuart Gorsky and Wendy Khoo



46th Annual Manhattan Beach Grand Prix Bike Race

Photos by Stuart Gorsky and Wendy Khoo



Welcome to your club station, the World Class W6TRW!

by W6TRW Shack Master Peter Livingston W3CRI



Your happy shack master, W3CRI pictured above, invites you to explore the world at your fingertips with this truly top-drawer equipment. Crouched over the key, the shack master is staring intently at that weak, feeble DX signal radiating from some scorching coral reef in the Pacific off the coast of Nowhere-In-Particular. That is, he is hoping to burn through the pileup with others, equally driven.

From the look of him at the right he was successful—but only time will tell as he waits to look up the DX station's log on the internet.

Some ask, "Isn't all of that obsolete—now that we have the internet? I can write or now, with VOIP, talk to anyone in the world on the net. Why bother extracting weak CW signals from all of that rattle?" Good questions. But then, do you go fishing with a hand grenade? Surely you will blow something up. I think that analogy answers the question.

Next to his complacent corpse in the chair is the completely automatic Alpha 87A 1.5 kW amplifier, and on the shelf above, the premier transceiver, the Yaesu FT 1000D. Of course, the computer is connected to it, as shown by the screen presence, so that logging chores are now automatic. The little blue box connects up to one of these beauties shown here.



Welcome to your club station, the World Class W6TRW!

by W6TRW Shack Master Peter Livingston W3CRI

Not many, living in covenant-restricted housing can boast of a full four element 40 meter beam! And does it work—as our DX record confirms. In addition, there are beams on 6 and two meters on the tower in the foreground and a tri-bander and WARC beams on the tower at a further remove.



For those who yearn to dip the plate current while increasing the loading, there is the venerable Henry amplifier ready to heat up its cathode just for you, and to its left is the Mark V and transverter. Underneath the screen is our shack's latest citizen—a two radio controller that also manages the various digital modes available and prevents inadvertent fratricide between two rigs on the same band.

Coming soon—a completely automated bandswitching feature-- simply depressing the key or mike switch causes all to whirl and clank and magically bring up the right antenna.

But we have further delights for those of you not of the HF persuasion. Here in this picture (fortunately, our DX travel gnome, the shack master, isn't blocking the view), you see a blue-gray frame containing 50 W VHF and UHF rigs, covering 144, 220, 440 MHz and 1.2 GHz. We have slow scan TV capability on 1.2 GHz for those burning to transmit their lovely shapes. There is, in the left of the frame picture, you might say, a 1 kW two meter Henry amplifier, modified by Dave Nelson, to work on the two meter band. It was a laboratory workhorse before its appearance in the shack.

We expect sometime in the near future to replace some of the VHF/UHF gear with more up-to-date equipment, but that exact details await Board analysis and approval.



Not shown in the antenna cluster are two wire antennas—one cut for the low end of 80 meters and the other a trap dipole for 80 and 160 meters. However, we are bathed in electrical noise. In an effort to pull the wax out of our radio ears, we will install an 80 meter/160 meter receive loop antenna that ought to improve the receiver picture quite a bit.

For those who are easily persuaded that working DX is better than eating, see your happy shack master for a checkout run.



by Paul Lukas, N6DMV

I have used the setup shown below with good results. The extra trap circuit can be a great help in eliminating QRM at field Days due to the proximity of the antennae.

Points to consider:

- A. Ground rods – ground rods - ground rods! The length of the rods should be 4 feet min., 5 feet even better. Push the rods all the way in the ground! I have seen rods only 6 inches deep in – they do nothing!!;
- B. Solid connections with heavy braid throughout;
Filter in the AC line. Eons ago I made 10 of them for the club. Location?;
- D Filter box right at the grounding rod – short braid grounding connection;
- E Tower ground – imperative for several reasons – charging, safety, RF elimination – hopefully no lightning!

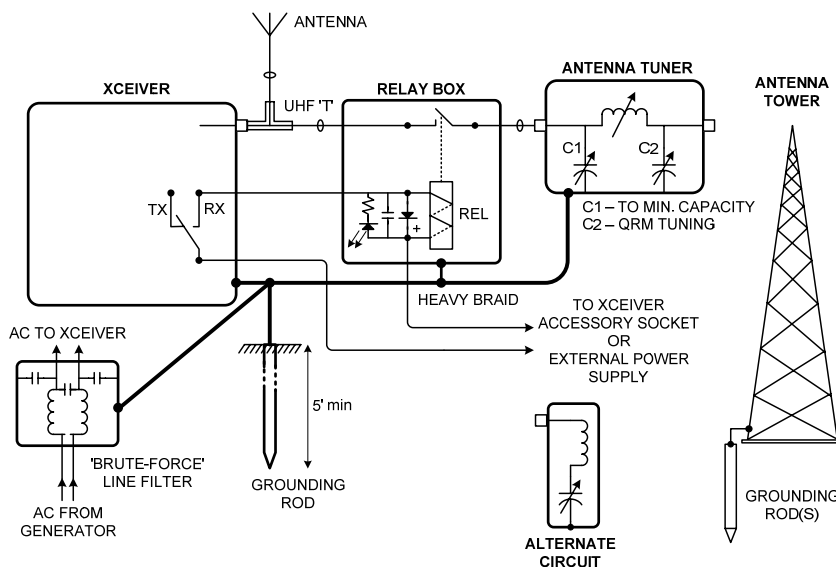
In addition to the above, I made a small metal box with a relay in it. Function: provide a short for QRM originating from in-band transmitters. Years ago I operated 40m phone without the box, and the 40m CW transmitter with a double-bazooka antenna wiped out my reception about 50% of the time.

Procedure:

- A Connect the relay box – the relay should energize when receiving, connecting the trap circuit;
- B Set the antenna tuner or trap box to the appropriate band. Set the input capacitor to minimum capacitance;
- C Wait for the ORM, then slowly tune the output capacitor until the ORM disappears or becomes weak.

When you notice the QRM again, turn the tuning capacitor slowly, until the signal disappears – your friend in the other tent changed frequency! This takes only 3-4 seconds.

If you use a boat anchor (i.e. TS-180S, as I) for your transceiver or a modern pre-selector equipped radio, an additional 15-20 dB improvement in QRM negation can be expected. Most of the modern transceivers have a notoriously wide receiver inputs.



PL/N6DMV

W6TRW ARA BANQUET RESERVATION REQUEST

**Join us for the 41st Annual W6TRW/ARA Awards Banquet
Saturday, November 10th, 2007 7:00 PM to 11:00 PM**

Dinner, Awards, Door Prizes, and Fun!

Happa Restaurant

(In the New Gardena Hotel)

***1641 W. Redondo Beach, Blvd.
Gardena, Ca. 90247***

The member price for the Banquet is \$5.00. An active club member may invite two (2) guest at the club rate of \$10.00 ea. Associated members may invite one (one) guest at the rate of \$10.00. The price includes dinner, tax, tips, etc. There will be a no-host bar.

RESERVATION REQUESTS ARE DUE BY October . 27th, 2007

All reservation requests will be confirmed by email no later than October 31st, 2007. If you do not receive a confirmation, please email Duane, at N6DSP@Yahoo.com to insure we received your reservation!



SPSC ARC Monthly Calendar of Events

Second Tuesday of each month	6:00 pm	Club Meeting Round Table Pizza, SE Corner Hawthorne/RB Blvds.
Third Tuesday of each month	12:00 noon	Emergency Communications Team Meeting R3 Emergency Operations Center
Third Monday of each month	5:30 pm	Executive Board Meeting, E2/9043h (All Club Members are invited)
Last Saturday of each month (Rain or Shine & Holidays)	7:00 am	SPSC ARC W6TRW Swap Meet Marine and Aviation (Southeast Corner)
During the Swapmeet	10:00 am	VE Exam Sessions in Cafeteria

Weekly Events

Every Monday Night (Except the 1st & Holidays)	7:30 pm	Disaster Communication Systems (DCS) Net DCS Members: Check in on 2m Rptr
Every Wednesday	12:00 noon	ECT Net on 2 meter Repeater All Amateurs Welcome
Every Wednesday	12:00 noon	NG Family Net 14.270 MHz
Every Thursday	6:00 pm	W6TRW Net on 2m Repeater All Amateurs Welcome
Every Thursday	7:00 pm	Space Hams Net on 2 meter Repeater with N6SHI and W6EKK
Every Mon, Wed, Fri	2200Z	W6TRW Retirees Net 7185 KHz
Every Friday Morning Talk-in on 2 meters	7:00 am	SPSC Amateur Radio Club Breakfast Building S Cafeteria - Everyone is invited



NGRC-SPSC Amateur Radio
Association

SPSC Amateur Radio Association
MS: S/1156
One Space Park Blvd.
Redondo Beach, CA 90278
Phone: 310-813-8569
E-mail: w6trw@amsat.org

www.w6trw.com

W6TRW 2-meter Repeater (Open Repeater)

145.320 (-600) PL 114.8 Hz

*W6TRW 70cm Repeater (Open Repeater /
Closed Autopatch)*

447.000 (-5 MHz) PL 100 Hz

W6TRW 23cm (1.2ghz) (Open Repeater)

1283.075 (-12mhz) PL 136.5 Hz

*W6TRW-3 Packet Radio Internet Gateway and
BBS (1200 Baud Port)*

146.745 (-600)

ELECTED OFFICERS

President	Bob Briggs	KD6WYQ	O1 / 1250	(310) 813-2622
Vice President	Greg Shreve	KE6YEX	R2 / 1120	(310) 812-9347
Commissioner	Mike Hamada	KF6UCN	M5 / 0560	(310) 814-2628
Secretary	Jim Winterroth	KF6IMA	R11 / 1053	(310) 812-2844
Treasurer	Wendell Young	KE6ASC	E2 / 9043	(310) 813-7691

APPOINTED STAFF

2m Repeater	John Cheatham	KE6OJM	R9 / 2896	(310) 813-5903
447 Repeater/Autopatch	Duane Park	N6DSP	M2 / 2200	(310) 813-2824
Activities Chairperson	Greg Shreve	KE6YEX	R2 / 1120	(310) 812-9347
Crosstalk Editor	Stuart Gorsky	K9STU	R5 / 1160	(310) 812-0255
Emer. Comm. Coordinator	Paul Goss	KG6OXM	01 / 2181	(310) 813-7150
Librarian	Jim Harrison	K6OUE	R6 / 2541	(310) 814-1937
Membership Chairperson	Open			
Past President	Wendell Young	KE6ASC	R3 / 1086	(310) 813-7691
Publicity Chairperson	Rod Scott	KE6PI	R1 / 1044	(310) 813-1493
QSL Manager	Craig Gullickson	N6ED	R6 / 2529	(310) 812-5389
Shack Master	Pete Livingston	W3CRI	R1 / 1096	(310) 813-9550
Swap Meet Manager	Wendy Crawford	KQ6CG		
Technical Chairperson	John Cheatham	KE6OJM	R9 / 2896	(310) 813-5903
Training Chairperson	Bryan DeAro	KN6OW	120 / 1020	(310) 812-4789
Trustee of W6TRW License	Pete Livingston	W3CRI	R1 / 1096	(310) 813-9550
Webmaster w6trw.com	Duane Park	N6DSP	M2 / 2200	(310) 813-2824